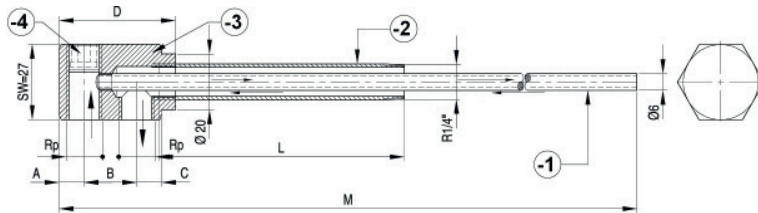


K7235 Kühlwasserverteiler

Cascade water junctions



Material: **Messing / brass**

Temp: -20°C-+200°C (-40°F - +390°F)

Einzelteile auf Anfrage / Individual parts on request

P= Stück / Normpackung // Pieces/ standard pack

A (mm)	D (mm)	C (mm)	M (mm)	P	Rp	B (mm)	L (mm)	Bestellnummer Order Number					
9	42	9	356	2	1/8"	19	50	K7235-1,8-19x 50					
							100	K7235-1,8-19x100					
							150	K7235-1,8-19x150					
							200	K7235-1,8-19x200					
										1/4"		50	K7235-1,4-19x 50
												100	K7235-1,4-19x100
												150	K7235-1,4-19x150
												200	K7235-1,4-19x200
	54	12	362		1/8"		50	K7235-1,8-26x 50					
							100	K7235-1,8-26x100					
							150	K7235-1,8-26x150					
							200	K7235-1,8-26x200					
										1/4"		50	K7235-1,4-26x 50
												100	K7235-1,4-26x100
												150	K7235-1,4-26x150
												200	K7235-1,4-26x200