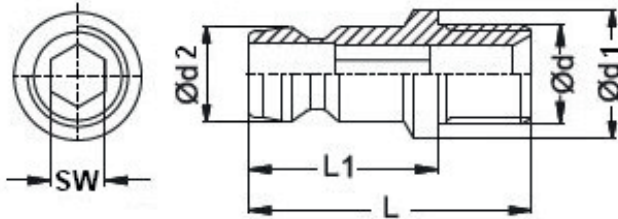


**K7105 Nippel mit Aussengewinde und Innensechkant,
mit Ventil oder freiem Durchgang**

**Connecting nipple with outside thread
and internal hexagon,
with and without valve**



P= Stück / Normpackung // Pieces/ standard pack

Material: Standardversion / Standard version

Grundkörper: Messing / Body: Brass

Ventil: Messing / Valve: Brass

Feder: Edelstahl / Spring: Stainless Steel

Temp: -20 °C-+200 °C (-40 °F - +390 °F)

Betriebsdruck / Working pressure: p (bar)



Optionen / Options:

Verchromt / Chrome plated – Index: -Cr

Vernickelt / Nickel plated – Index: -Ni

Edelstahl / Stainless Steel – Index: -S

Bei optionaler Bestellung bitte Kennbuchstaben hinzufügen:
For optional orders please add the options index end of the order no.:
(Beispiel/example: K7105-d2-d-V-Cr)

p (bar)	SW (mm)	d1 (mm)	L1 (mm)	L (mm)	P	d2 (mm)	d (mmx)	 Bestellnummer Order Number Mit Ventil / with Valve	 Bestellnummer Order Number ohne Ventil / without Valve
0-10	5	10	17	24	20	9	M8x0,75		K7105-09-M8x0,75
		11					M10x1,0	K7105-09-M10x1,0	
		13,5					BSP 1/8"	K7105-09-BSP 1/8	
							BSP 1/4"	K7105-09-BSP 1/4	
0-15	8	14,5	26	13	M14x1,5	K7105-13-M14x1,5-V			
					BSP 1/4"	K7105-13-BSP 1/4-V			
					BSP 3/8"	K7105-13-BSP 3/8-V			
		17							