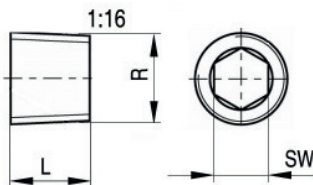


## K7190 Verschlusschrauben

### Pressure plugs



Material: **Standardversion / Standard version**

Grundkörper: Messing / Body: Brass

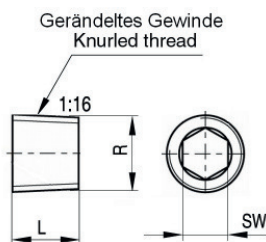
Temp: -20 °C-+200 °C (-40 °F - +390 °F)

P= Stück / Normpackung // Pieces/ standard pack

SW (mm)	L (mm)	P	R	Bestellnummer Order Number
5	8	20	BSPT 1/8	K7190 - BSPT 1/8
7	10		BSPT 1/4	K7190 - BSPT 1/4
8			BSPT 3/8	K7190 - BSPT 3/8
5	8		M10 x 1,0	K7190 - M10 x 1,0
10	10		BSPT 1/2	K7190 - BSPT 1/2

## K6195 Gerändelte Verschlusschrauben

### Knurled Pressure plugs



Material: **Standardversion / Standard version**

Grundkörper: Messing / Body: Brass

Temp: -20 °C-+200 °C (-40 °F - +390 °F)

P= Stück / Normpackung // Pieces/ standard pack

SW (mm)	L (mm)	P	R	Bestellnummer Order Number
4	8	20	M 8x0,75	K7195 - M 8x0,75
5			M10 x1,0	K7195 - M10 x1,0
			BSPT 1/8	K7195 - BSPT 1/8
7	10		BSPT 1/4	K7195 - BSPT 1/4
8			BSPT 3/8	K7195 - BSPT 3/8
6	8		M12 x 1,5	K7195 - M12 x 1,5
7	10		M14 x 1,5	K7195 - M14 x 1,5
10			BSPT 1/2	K7195 - BSPT 1/2